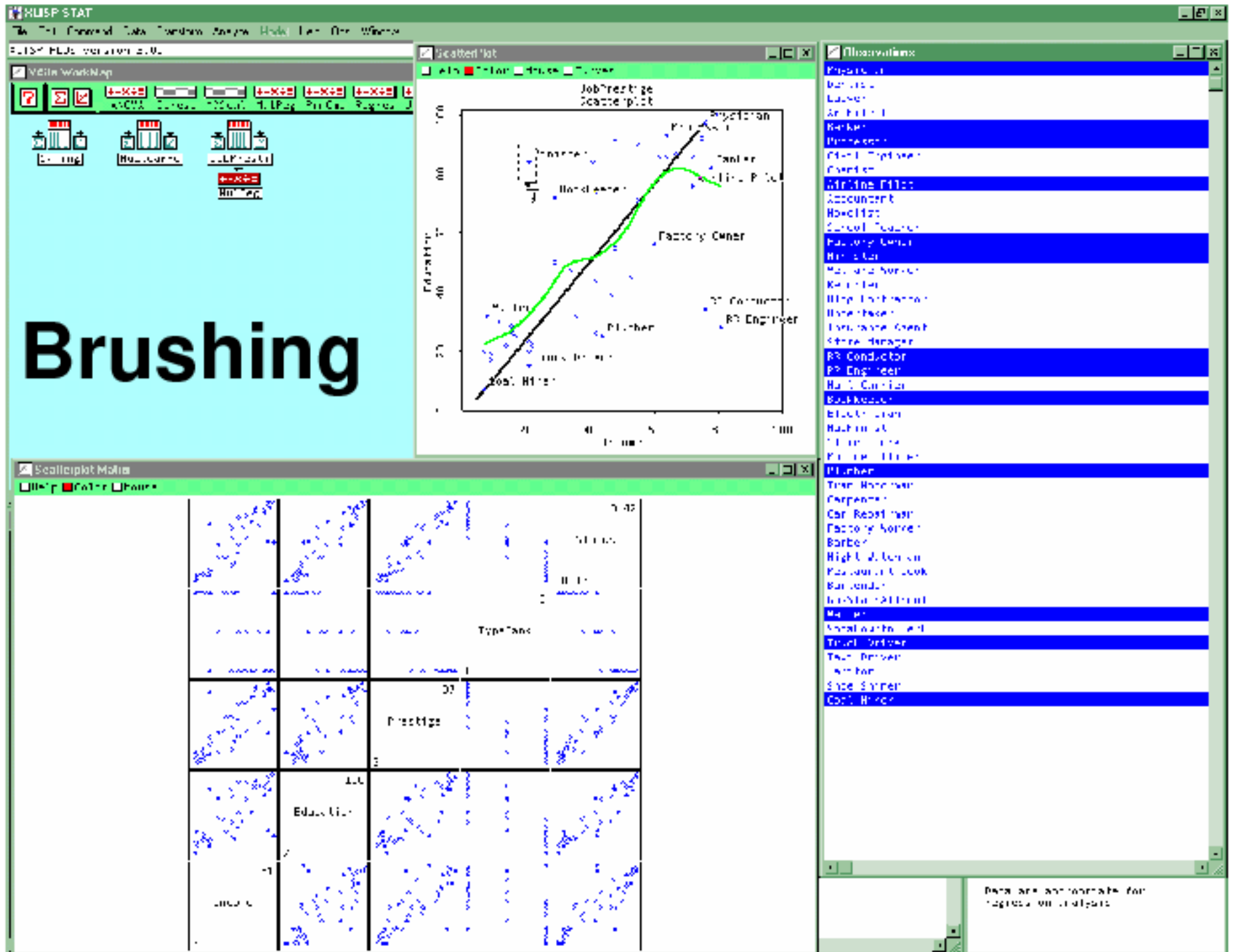
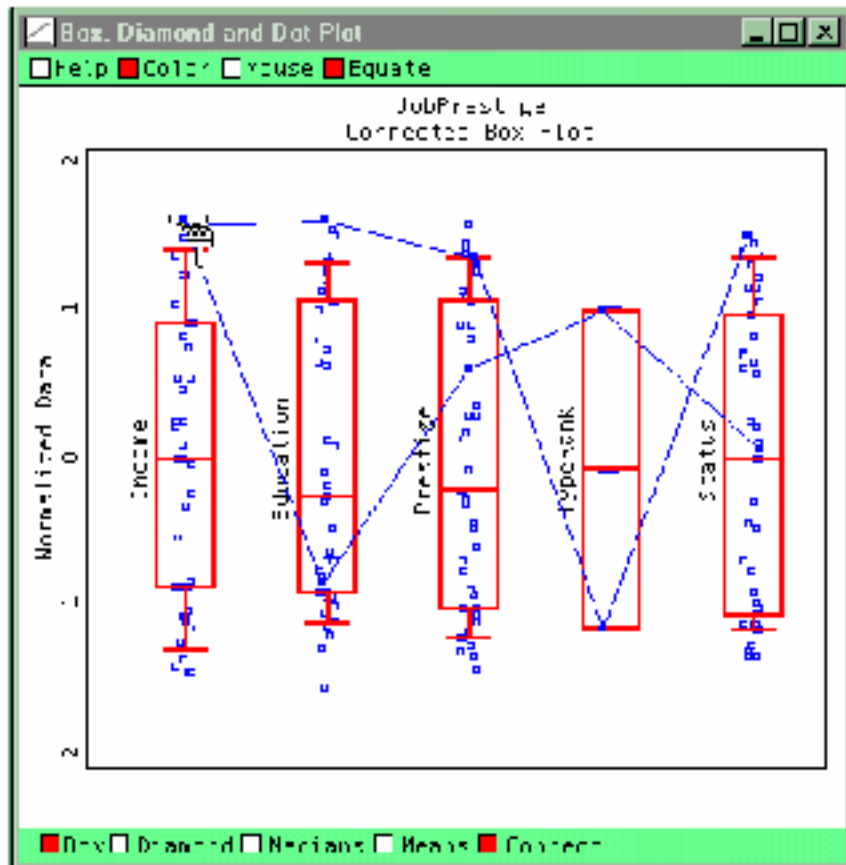


Interaction & Color

Aleks Jakulin



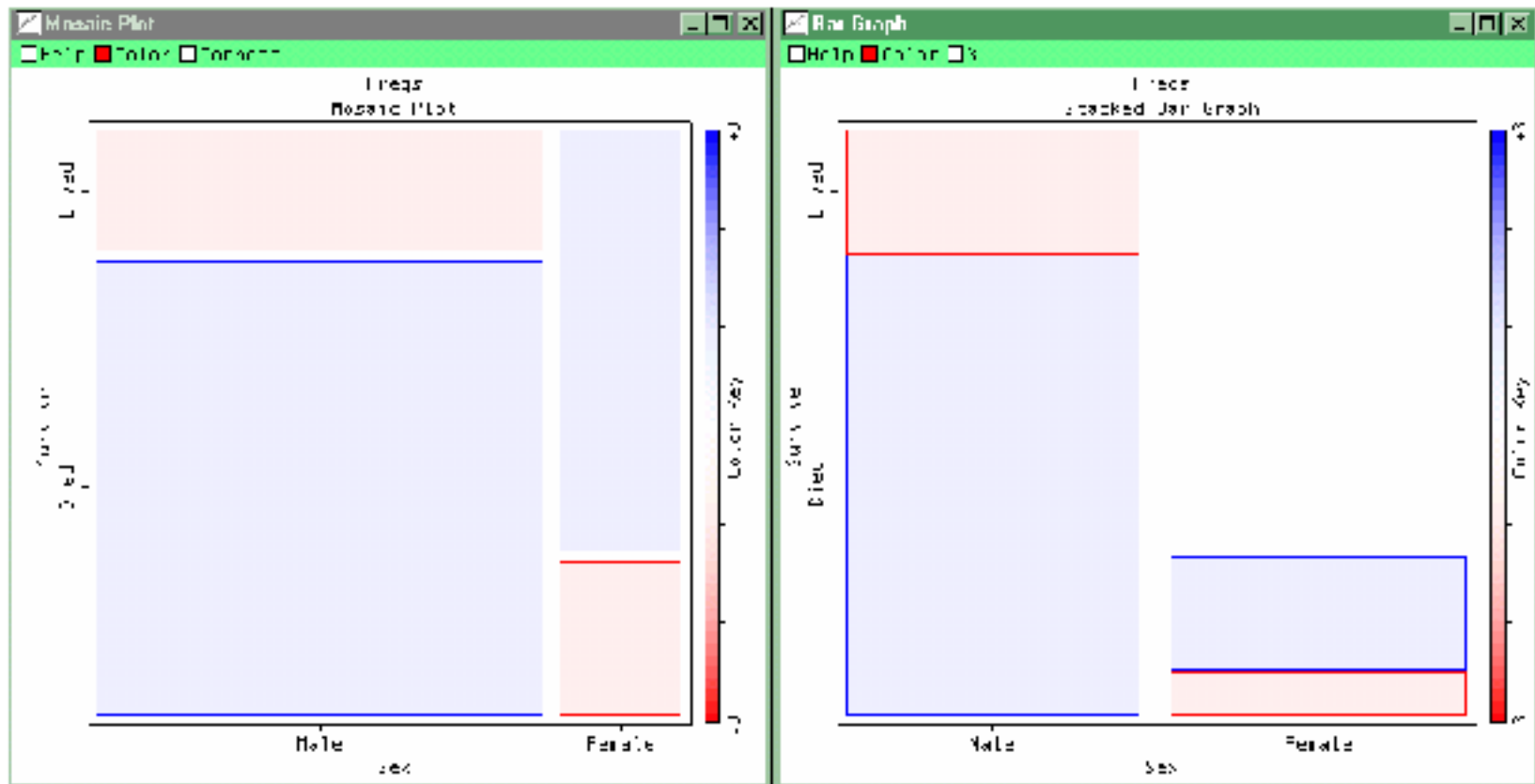
Brushing 2



Observations

Physician
Dentist
Lawyer
Architect
Banker
Professor
Civil Engineer
Chemist
Airline Pilot
Accountant
Novelist
School Teacher
Factory Owner
Minister
Welfare Worker
Reporter
Bldg Contractor
Undertaker
Insurance Agent
Store Manager
RF Commercial
K9 Engineer
Mail Carrier
Bookkeeper
Electrician
Machinist
Student

Mosaic Plots



Graphical Model Comparison

Two models:

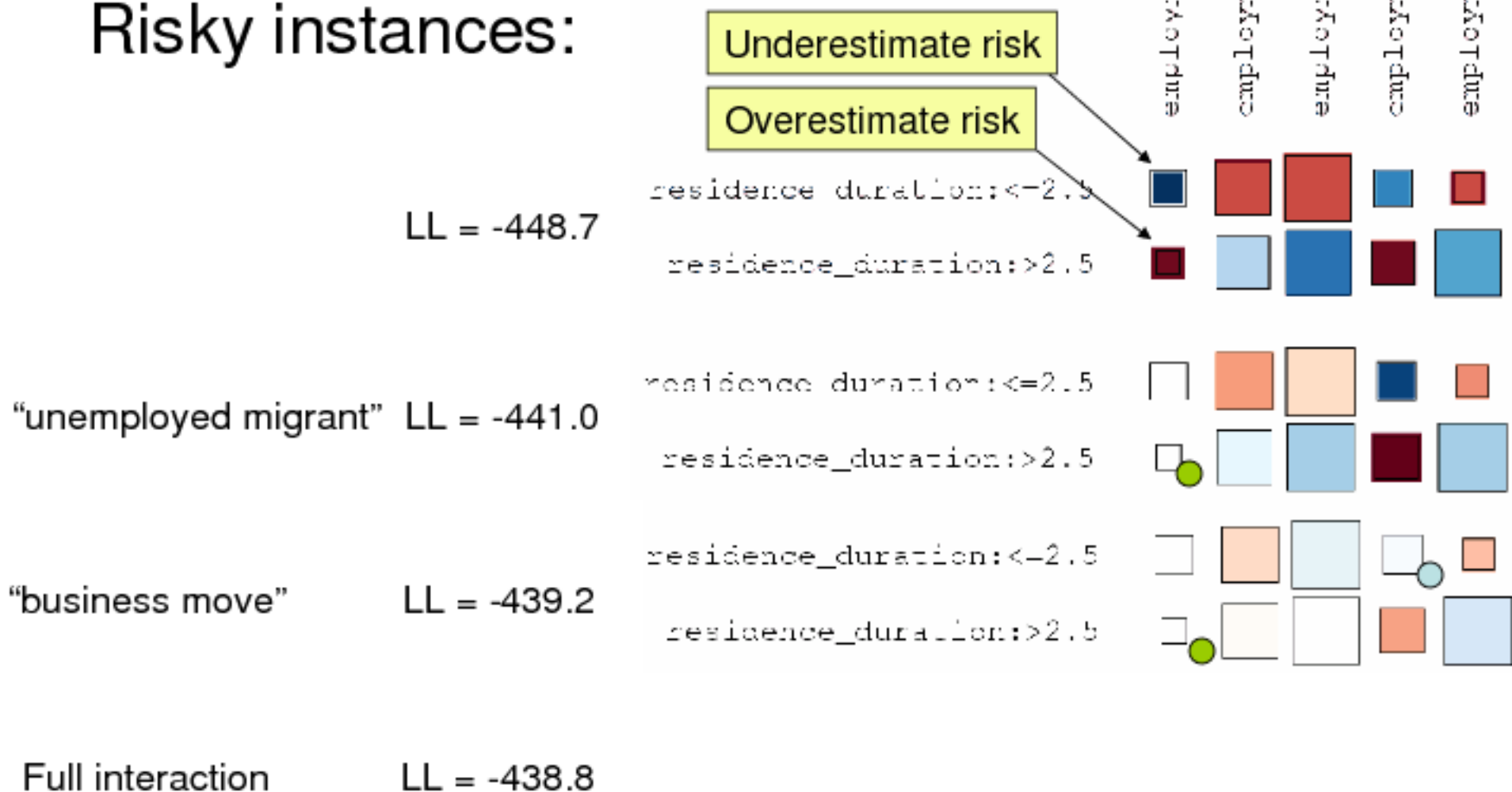
1. Assume independence between eye and hair color.
2. Assume dependence between eye and hair color.

Compare the difference in predictions of these two models (std. Pearson residuals).

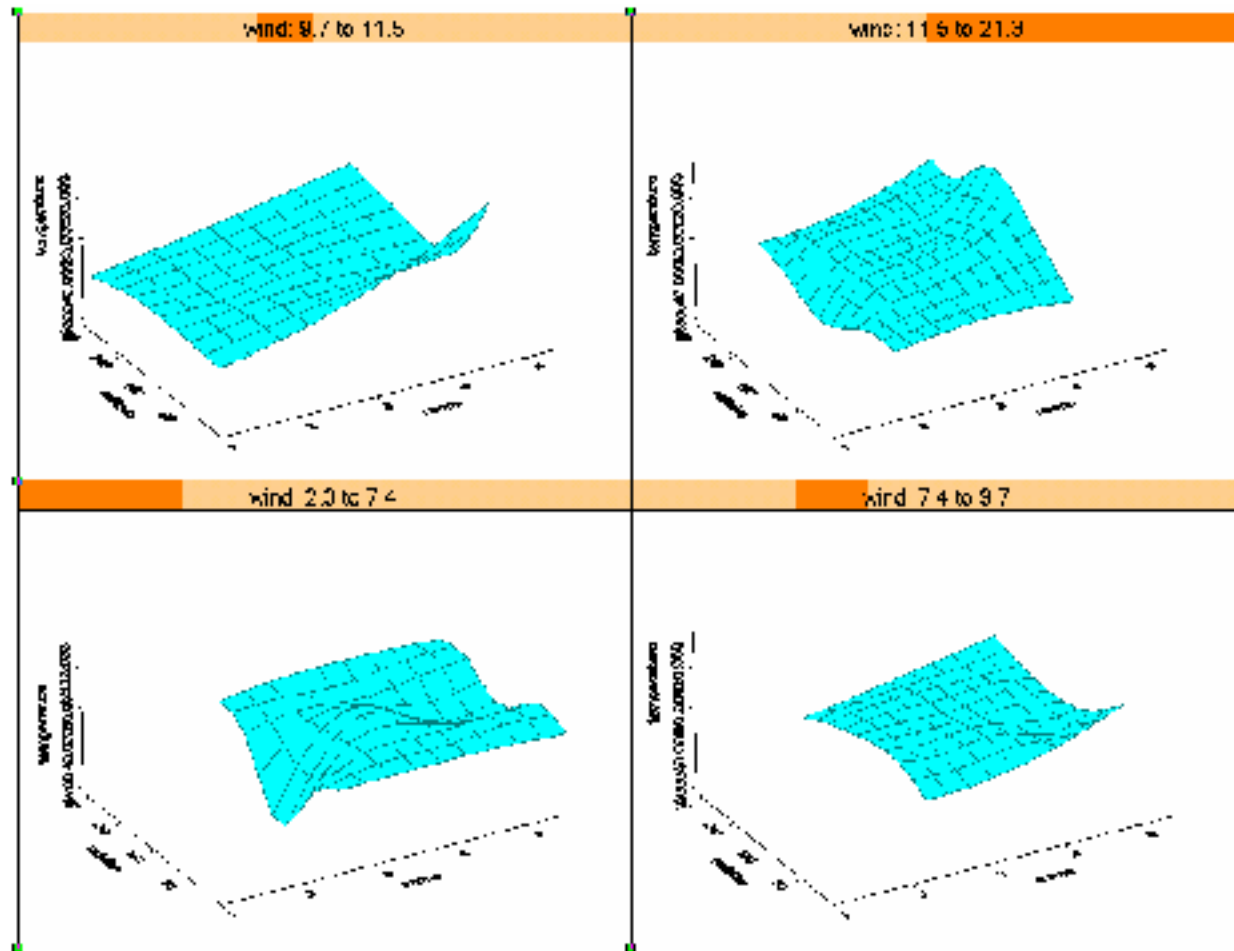


Analysis of LR Residuals

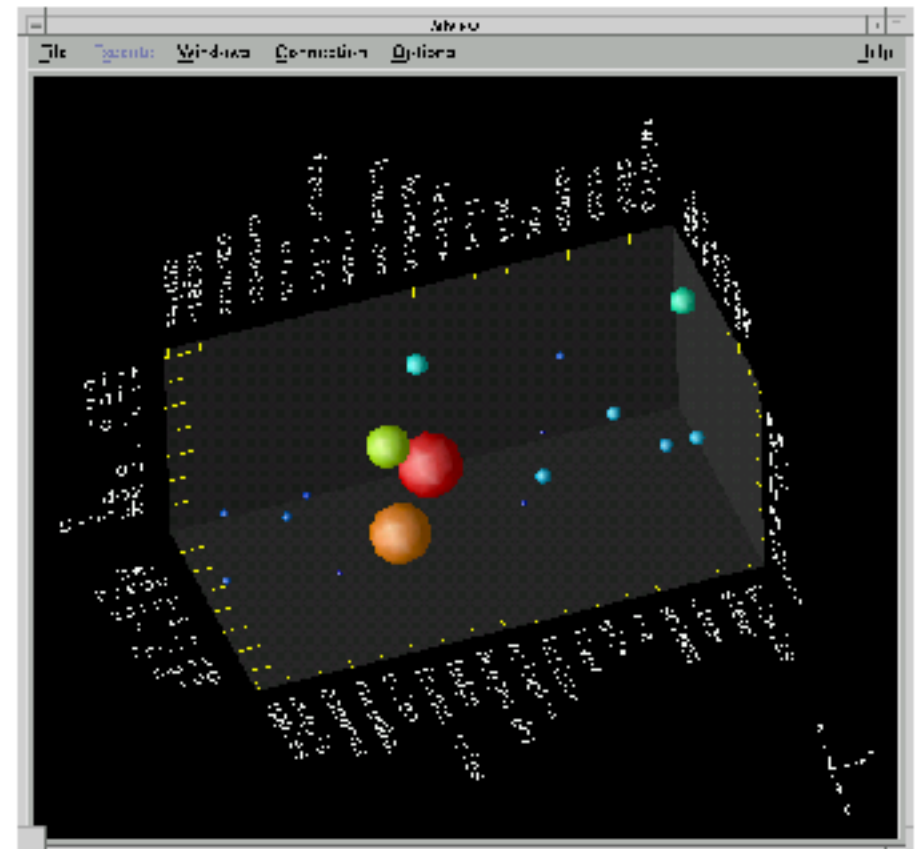
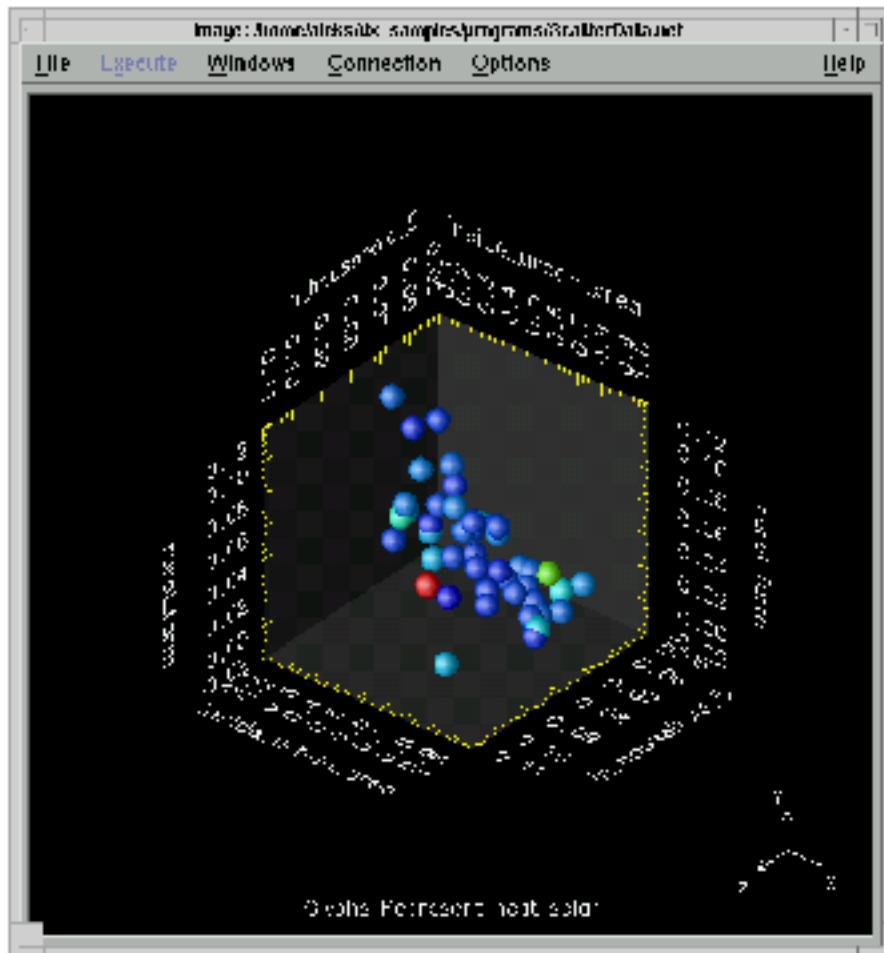
Risky instances:



Trellis Plots



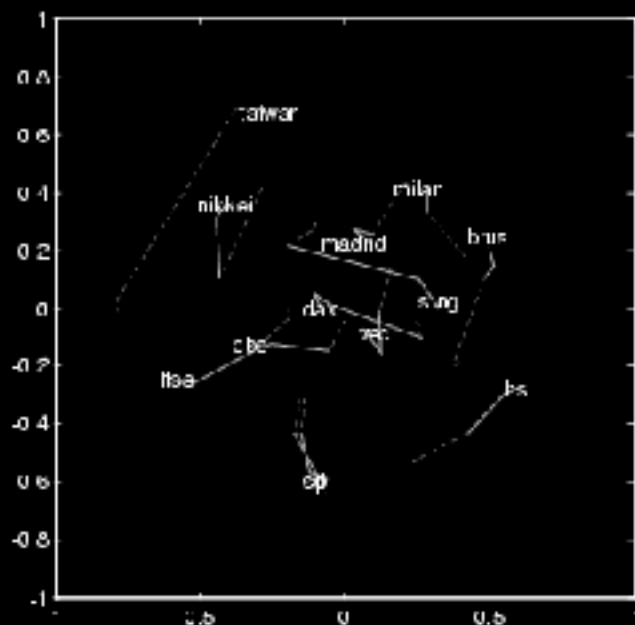
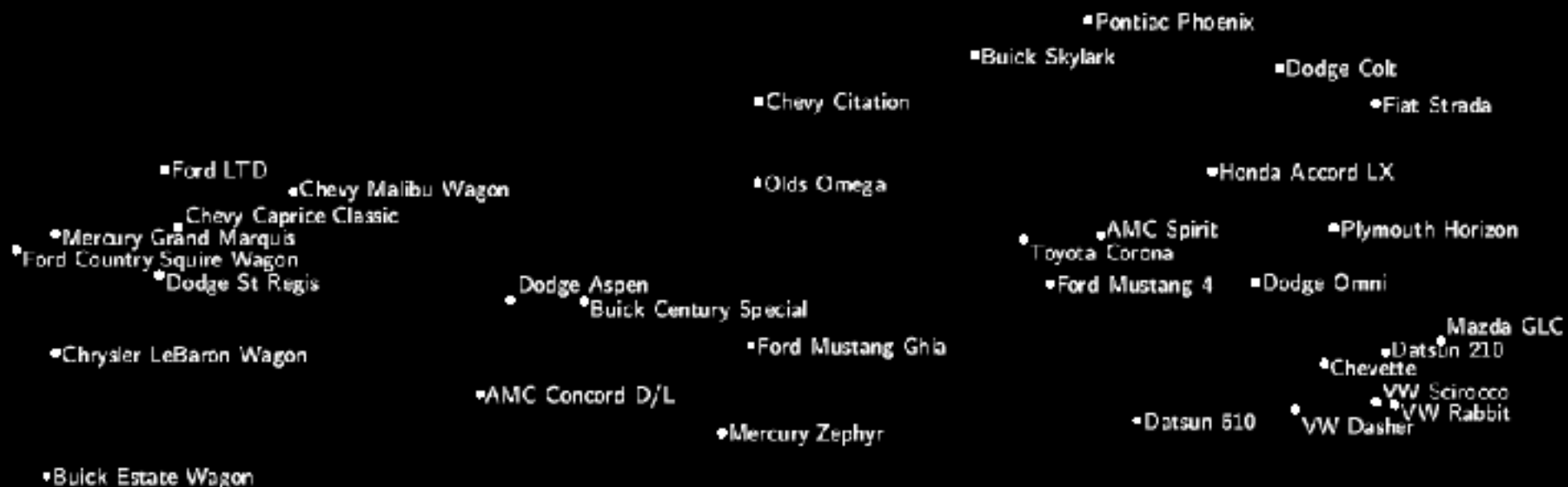
3D



5 dimensions:

- Space
- Color
- Size

Multidimensional Scaling



Visual Elements

	Nominal	Ordinal	Numerical
• Quantity:			
– position	<input checked="" type="radio"/>	<input checked="" type="radio"/>	<input checked="" type="radio"/>
– size	<input checked="" type="radio"/>	<input checked="" type="radio"/>	<input checked="" type="radio"/>
– grayscale		<input checked="" type="radio"/>	<input type="radio"/>
• Difference:			
– direction	<input type="radio"/>	<input type="radio"/>	<input checked="" type="radio"/>
– color	<input checked="" type="radio"/>	<input type="radio"/>	<input type="radio"/>
– shape	<input checked="" type="radio"/>		
– pattern	<input checked="" type="radio"/>	<input type="radio"/>	<input type="radio"/>

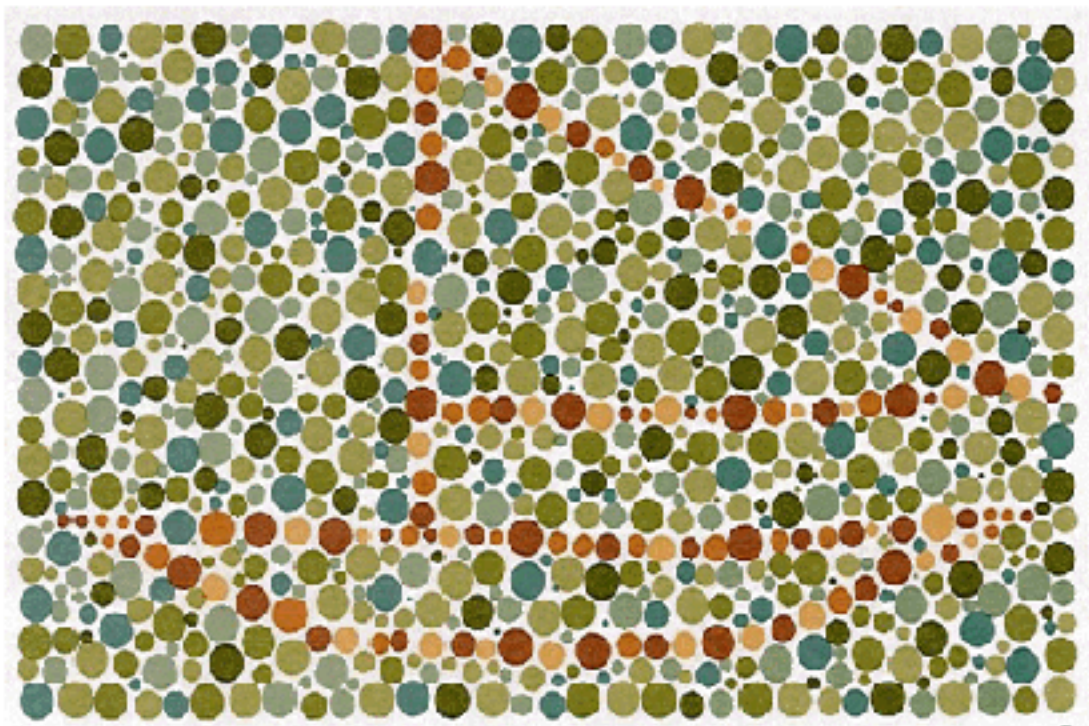
Demo

- VRML

<http://cic.nist.gov/vrml/vbdetect.html>

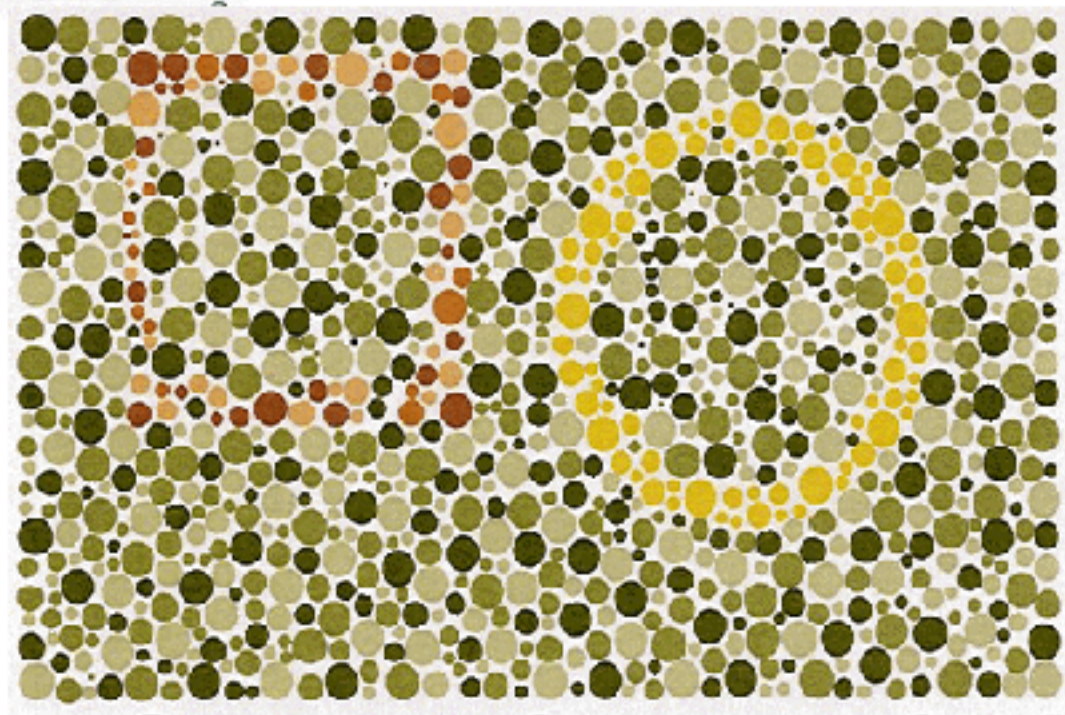
- Orange

<http://www.ailab.si/orange/>



sailboat

square & circle



Ishihara test

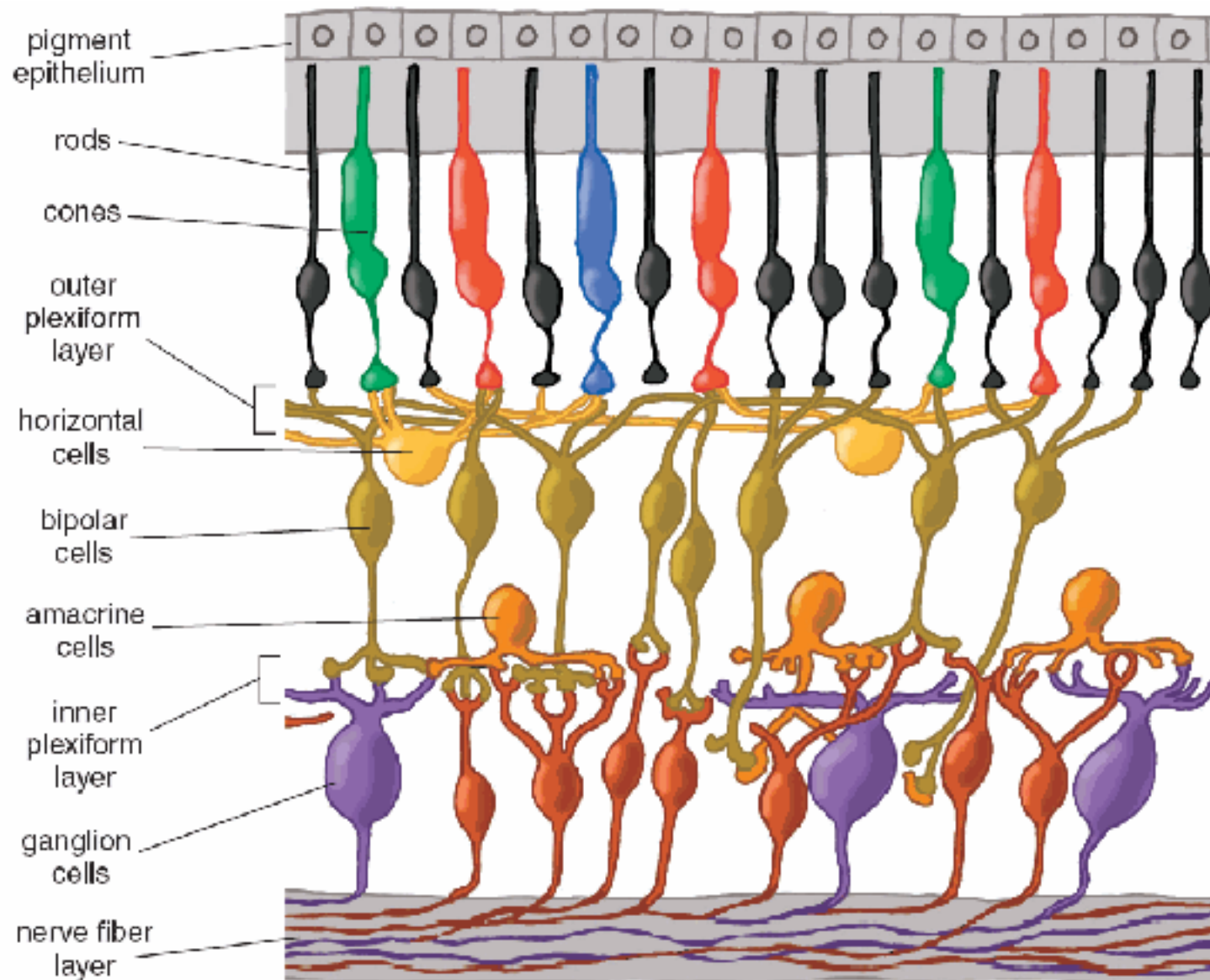


Figure 3. Cells in the retina are arrayed in discrete layers. The photoreceptors are at the top of this rendering, close to the pigment epithelium. The bodies of horizontal cells and bipolar cells compose the inner nuclear layer. Amacrine cells lie close to ganglion cells near the surface of the retina. Axon-to-dendrite neural connections make up the plexiform layers separating rows of cell bodies.

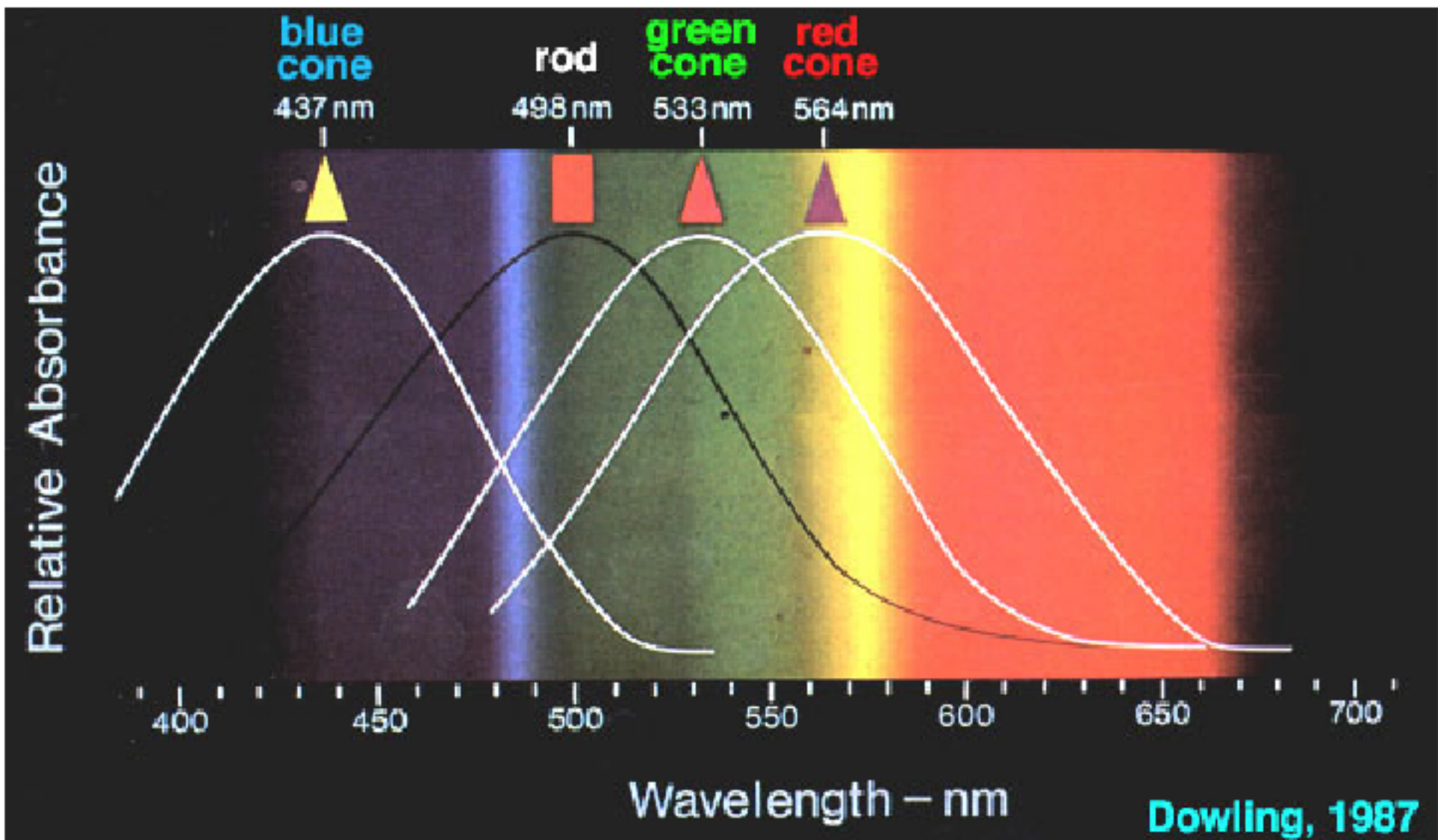
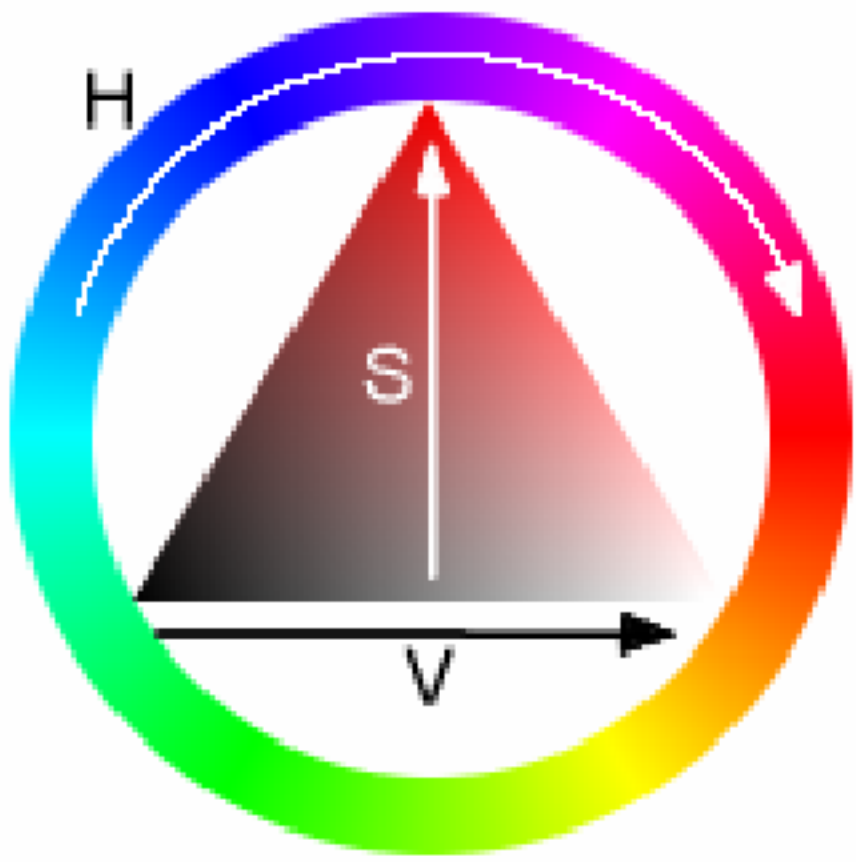
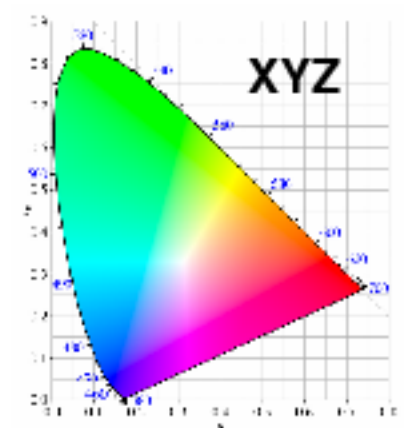
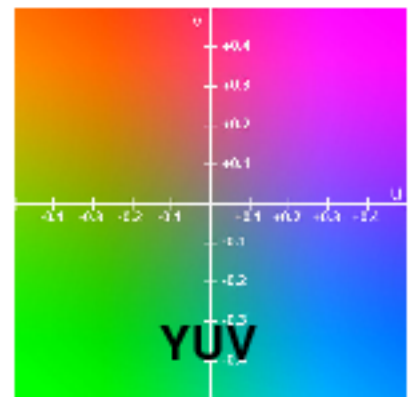
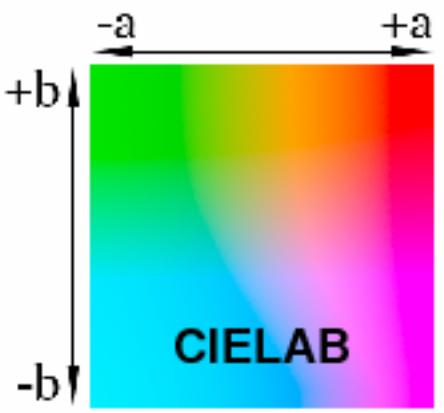


Fig. 14. The peak spectral sensitivities of the the 3 cone types and the the rods in the primate retina (Brown and Wald, 1963). From Dowling's book (1987).

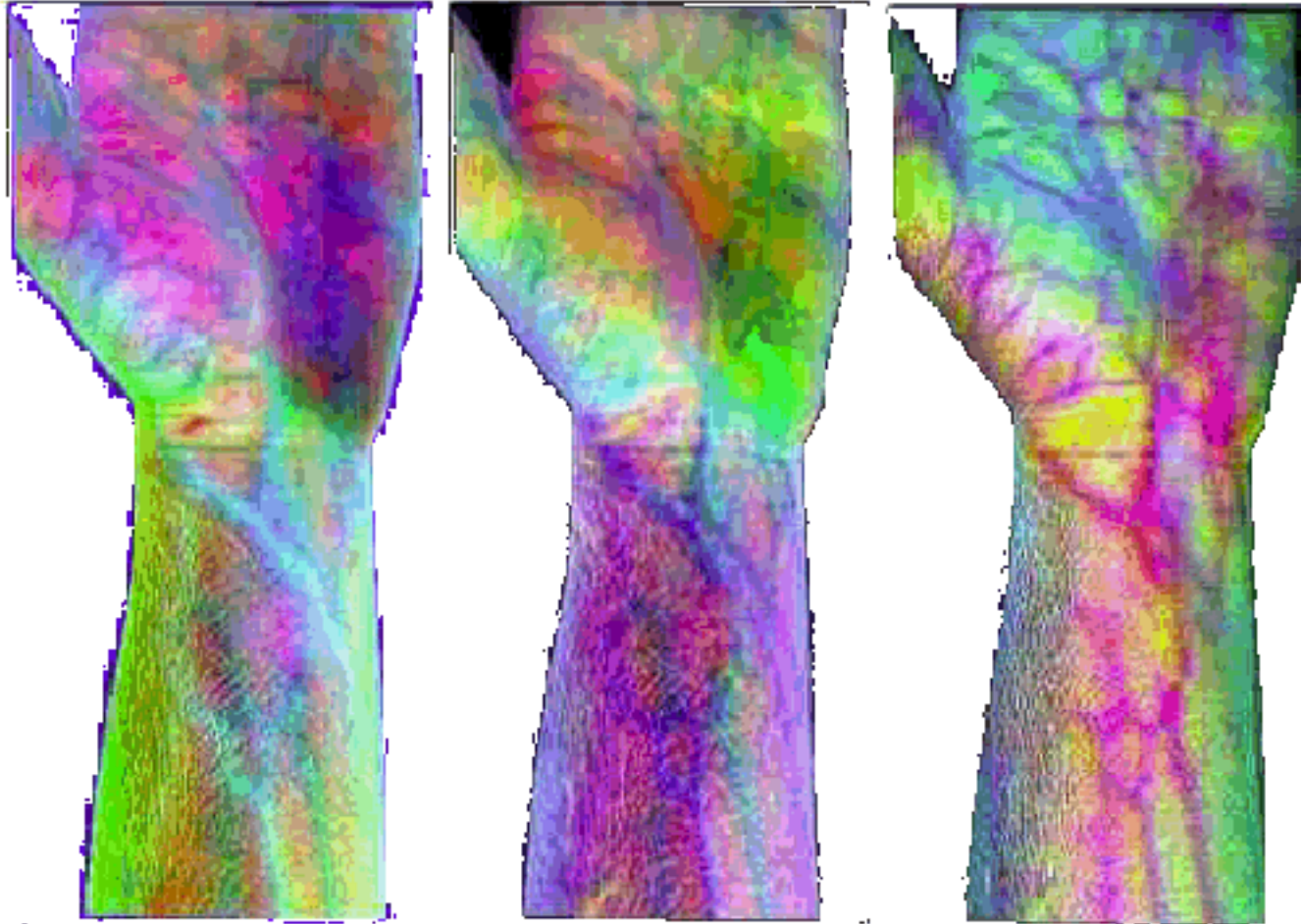
Color Spaces



HSV: hue / saturation / value

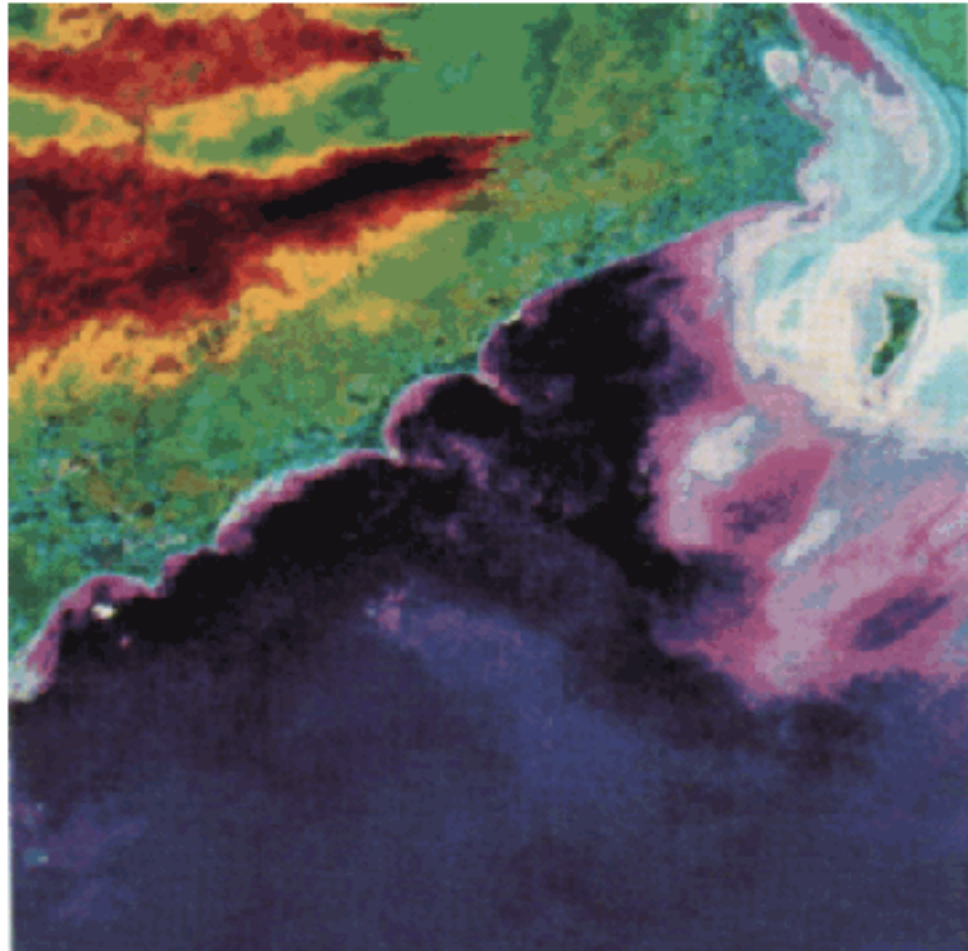


Hyperspectral Photography

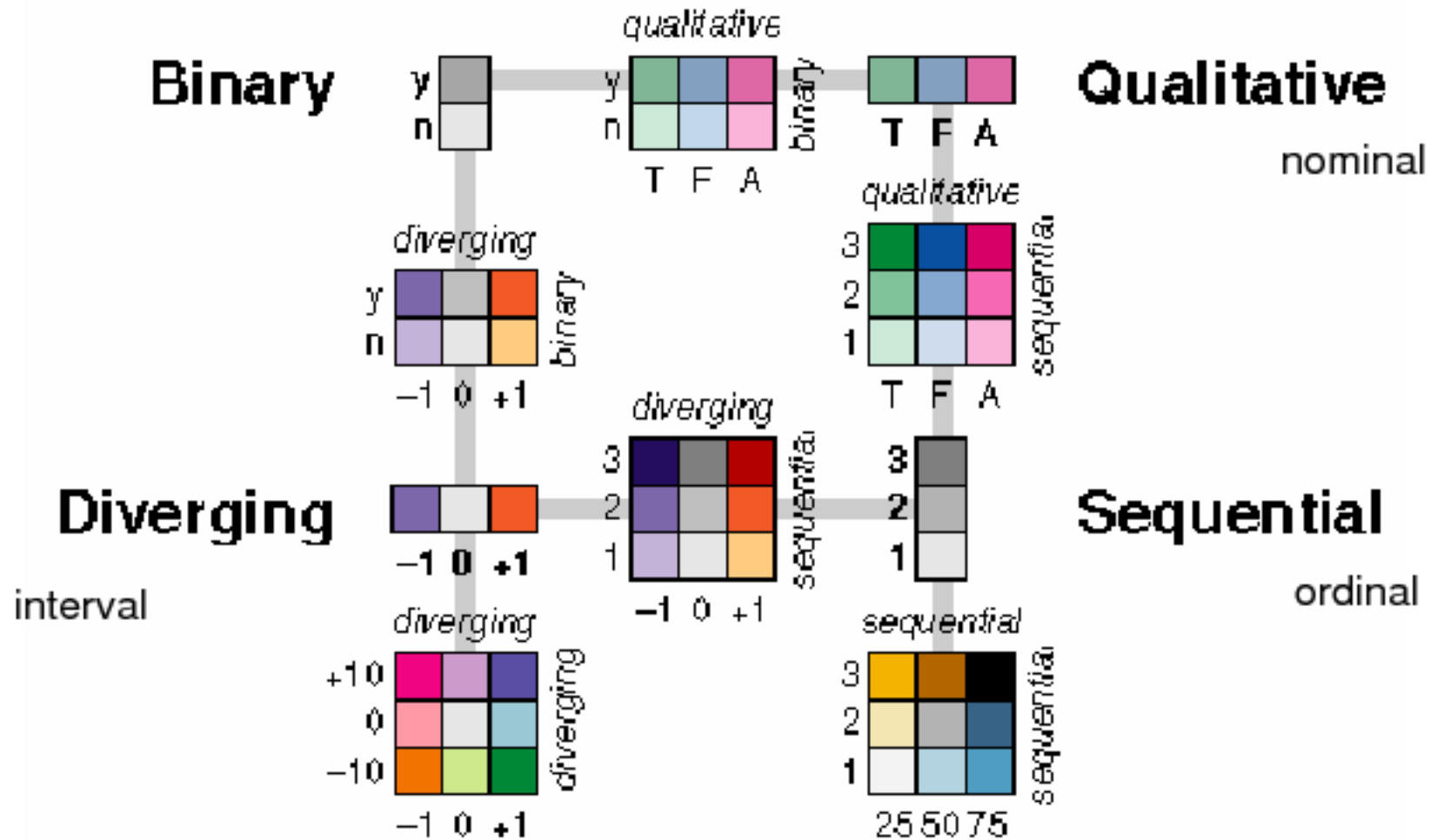


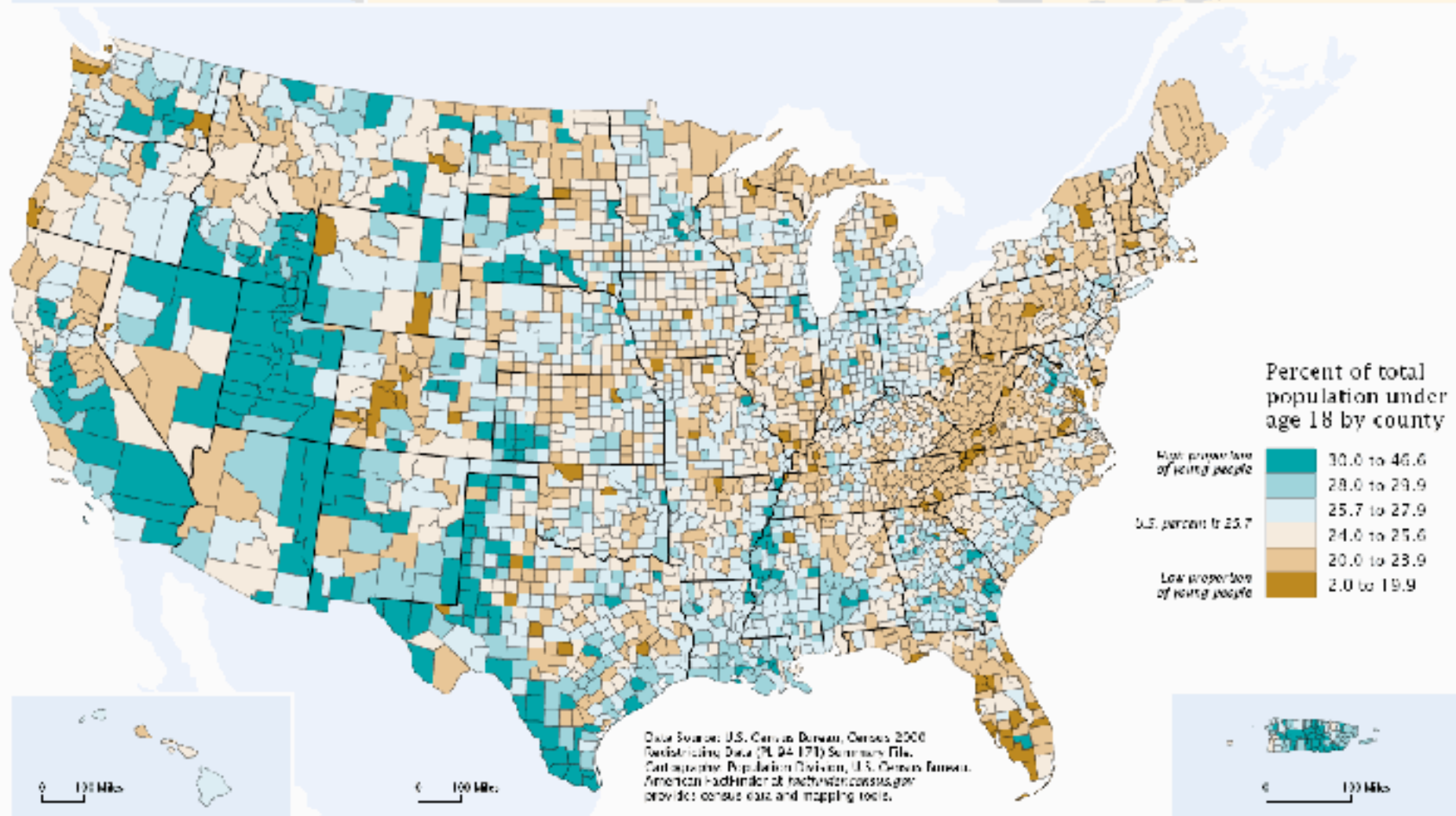
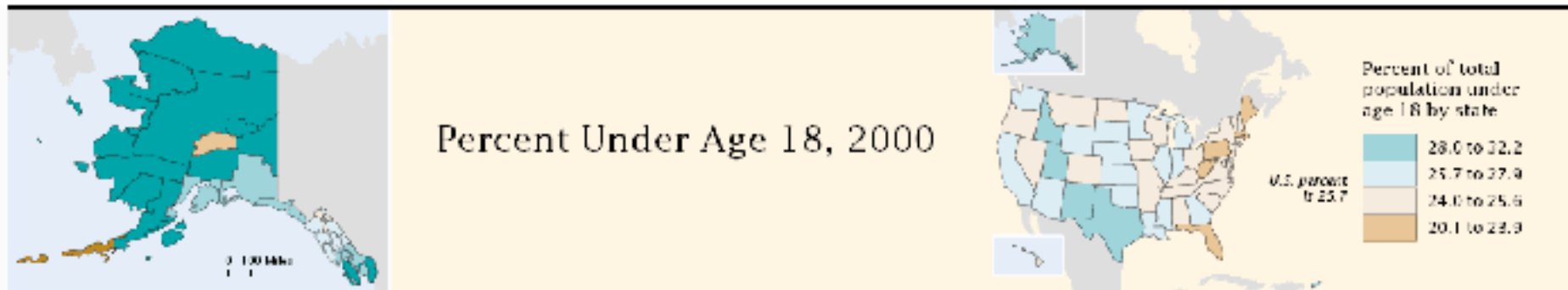
Principal components -> RGB

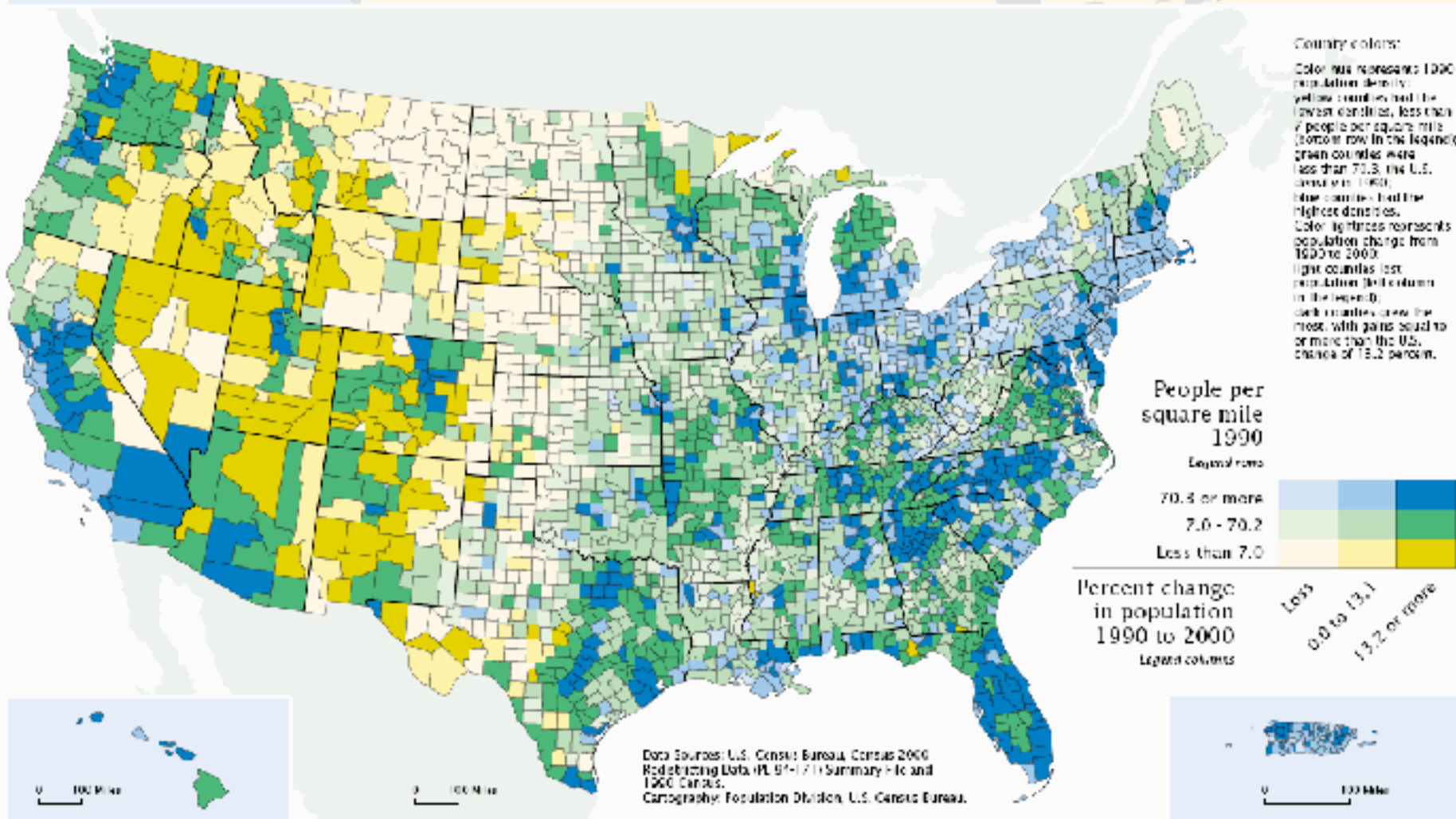
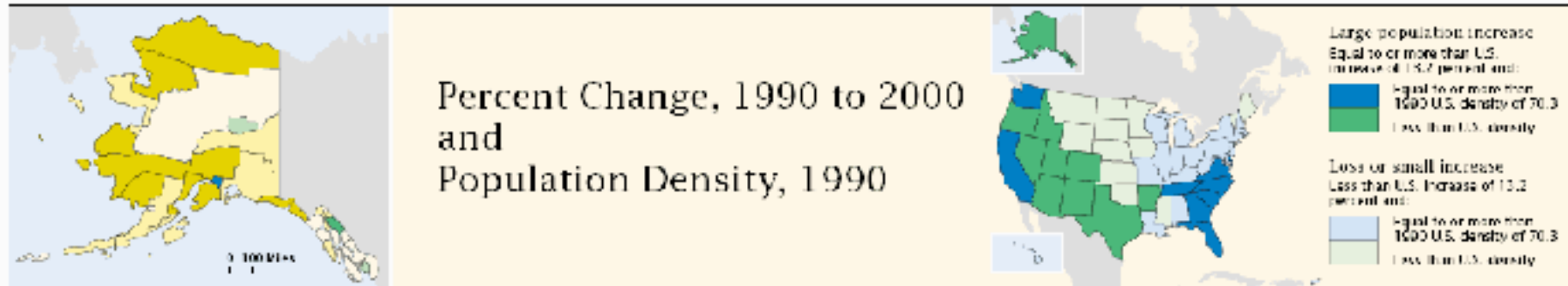
Clustering of Terrain Types

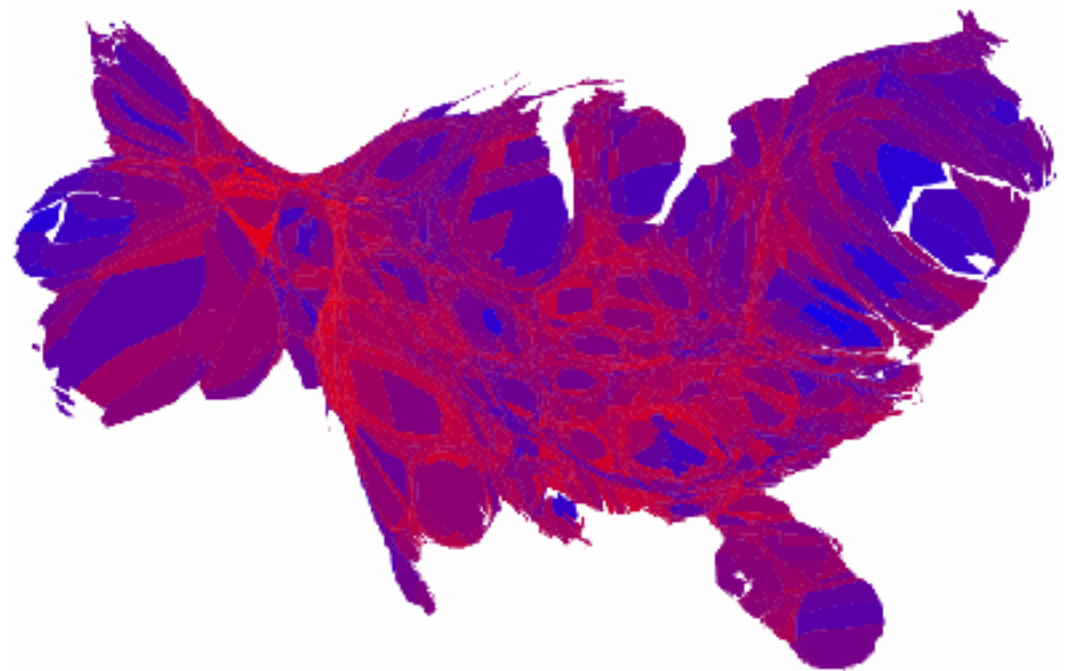
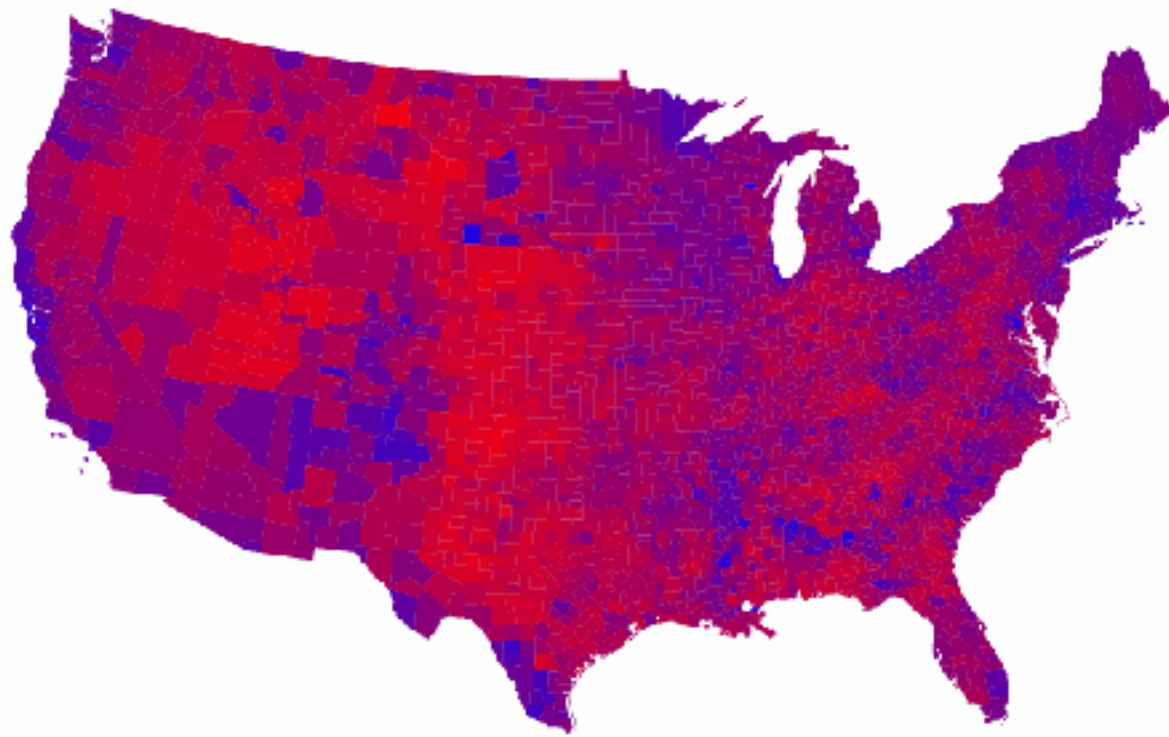


Types of Variables









**Maps and cartograms of the
2004 US presidential election
results**

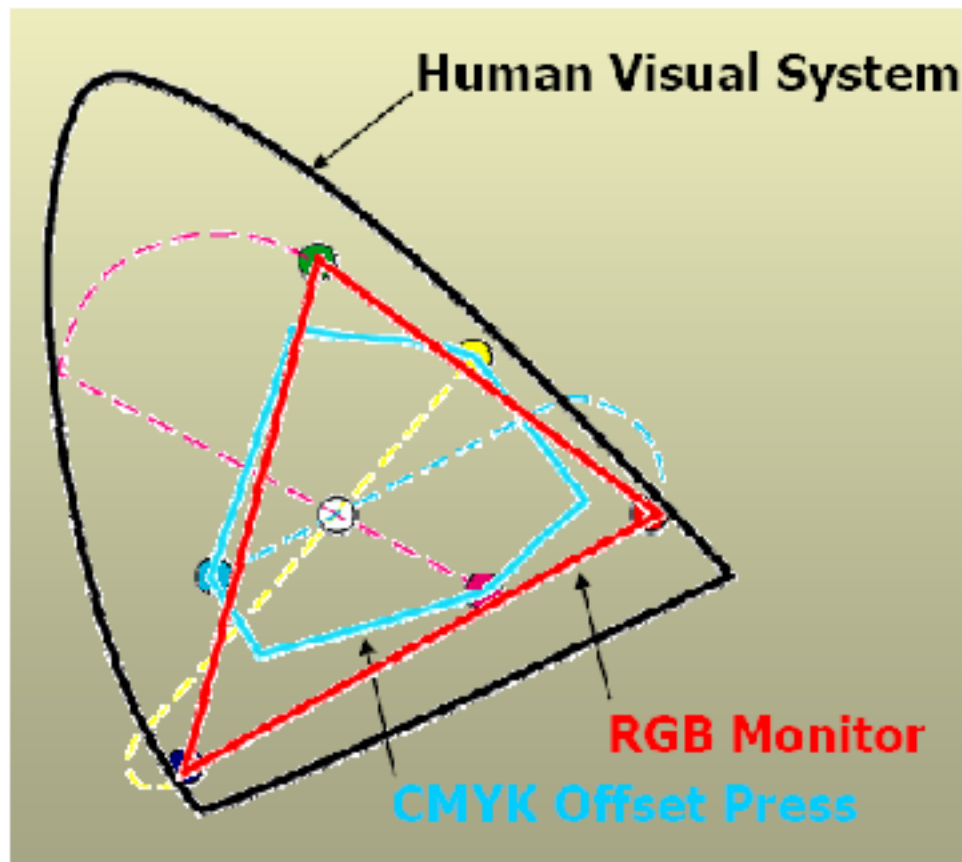
Michael Gastner, Cosma Shalizi,
and Mark Newman

Demo

<http://colorbrewer.org/>

<http://www.colorschemer.com/>

Gamut



Alpha Channel

(partial opacity)



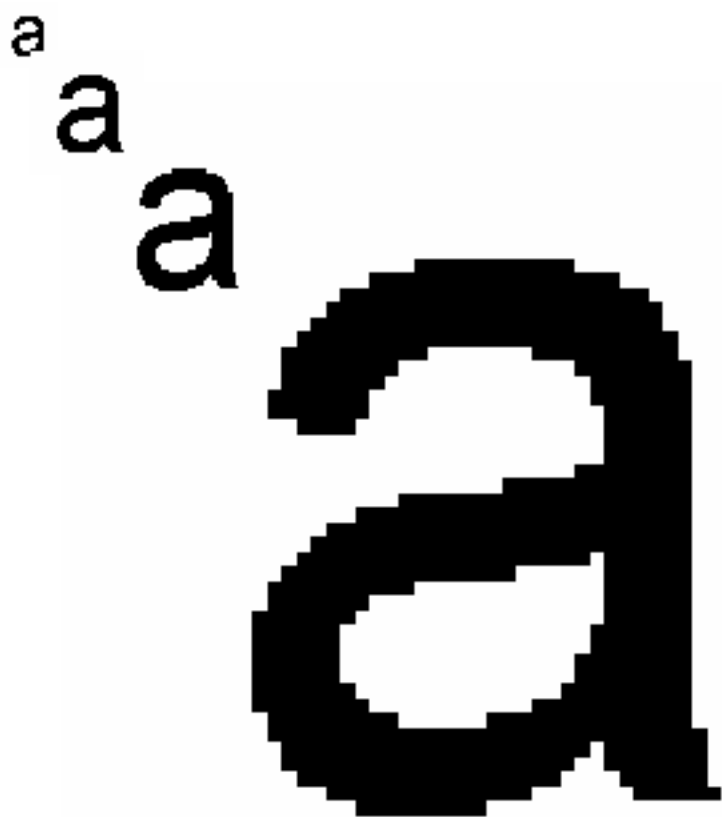
Aliasing VS Antialiasing



Vector vs Raster Graphics

Raster/bitmap formats

PNG, JPG, (GIF)



Vector formats

EPS, PDF, PS, SVG

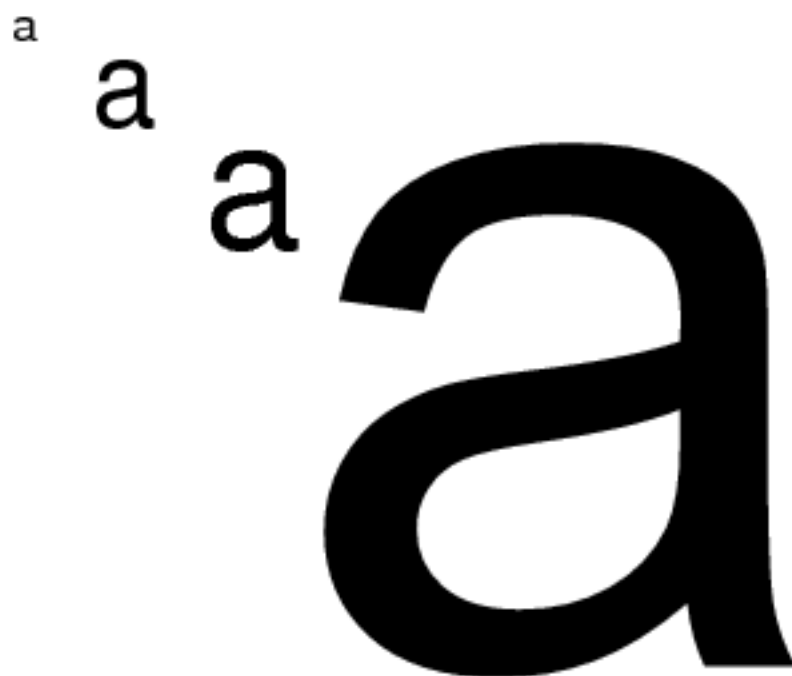


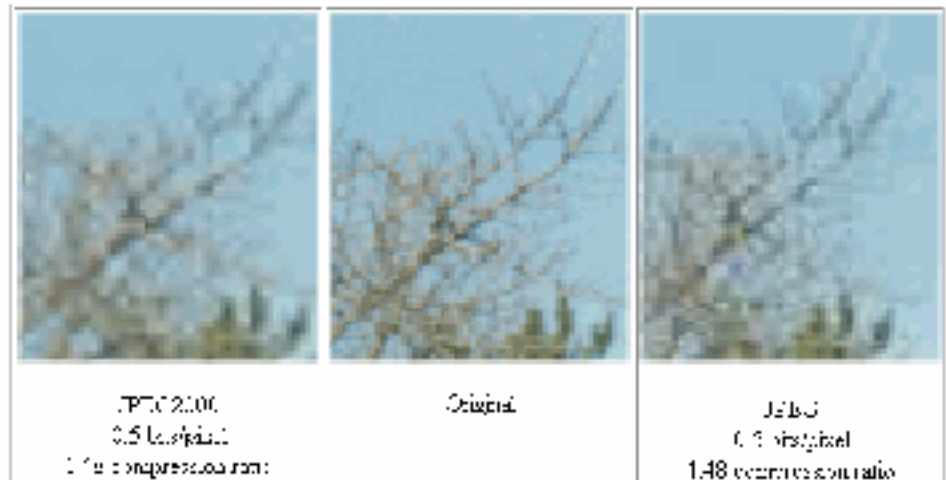
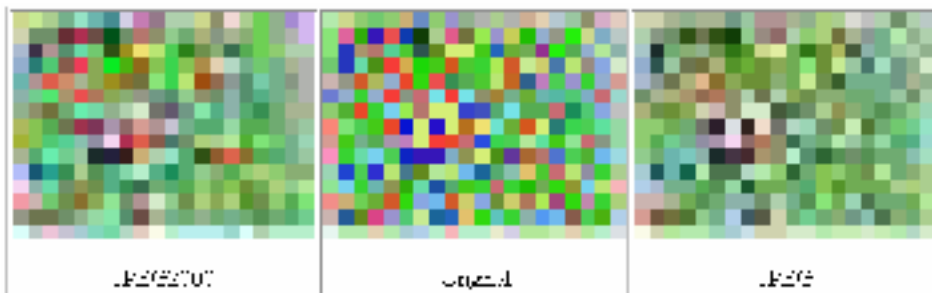
Image Distortions

not be inferred from established approach as generalizations as McGill's interaction	not be inferred from established approach as generalizations as McGill's interaction	not be inferred from established approach as generalizations as McGill's interaction
JPEG2000 0.42 bits/pixel	6 level of synthesis (PNC) 0.54 bits/pixel	JPEG 0.72 bits/pixel

RINGING



Color WASHING



BLOCKING

Software

Commercial:

- Paint Shop Pro (raster)
- Corel Draw
- Adobe Illustrator

Free:

- GIMP (raster)
- InkScape
- Xfig Jfig WinFIG